

Building Alliances at the International Maritime Organization

Focus on Black Carbon Impacts in the
Arctic and Inuit Led Management of
Pikialasorsuaq

Lisa Koperqualuk - President Inuit
Circumpolar Council – Canada

Kuupik Kleist - President Inuit Circumpolar
Council - Greenland



INUIT NUNAAT

INUIT HOMELAND



RUSSIA

CHUKOTKA

Arbat

Provideniya

Chukchi Sea

Bering Sea

BERING STRAIT

NORTHWEST ARCTIC

NORTH SLOPE

YUKON-KUSKOKWIM

U.S.A.

Beaufort Sea

Arctic Ocean

Greenland Sea

KALAALLIT NUNAAT
GREENLAND

Baffin Bay

Labrador Sea

INUVIALUIT SETTLEMENT REGION

NUNAVUT

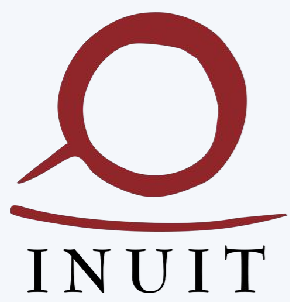
CANADA

NUNAVIK

NUNATSIAVUT



Inuit Circumpolar Council, 2011
Prepared by Agate Graphics, based on the Atlas of
Canada Reference Map Series produced by Natural
Resources Canada, 2008
Scale 1:8,000,000
0 100 200 400
Kilometers
Agate Graphics Projection



“We [Inuit] are an international community sharing common language, culture, and a common land along the Arctic coast of Siberia, Alaska, Canada and Greenland. Although not a nation-state, as a people, we do constitute a nation.”

-Eben Hopson, Sr.



Photo: Jacki Cleveland

Increased Shipping and Sea Ice Melt

Increased traffic from shipping interferes with marine mammal habitat

13%

Ice Melt per Decade

<https://climate.nasa.gov/vital-signs/arctic-sea-ice/>

2021

The year where annual average sea ice volume was 7th lowest on record

<https://climate.nasa.gov/vital-signs/arctic-sea-ice/>

75%

Percent increase in distance sailed by vessels in the Arctic from 2013-2019

PAME Study

25%

Percent increase in unique ships in the Arctic from 2013-2019

PAME Study





Black Carbon's Arctic Impact

Black carbon, commonly known as soot, is a particulate pollutant that negatively affects both the climate and human health. Soot particles suspended in the atmosphere absorb sunlight, adding to global warming. And when it collects on ice and snow, it hastens melting.



NEGATIVE IMPACTS OF BLACK CARBON

Particulates trapped in lungs leads to illness



Clean clouds reflect sunlight

Sooty clouds absorb sunlight, creating changes in cloud and rain patterns

Clean snow and ice reflect sunlight

Black carbon particles absorb sunlight, warming the snow and ice, increasing melting

CAUSES

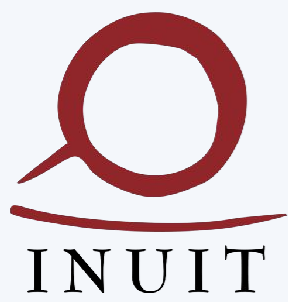
- ▼ Smoke from open burning
- ▼ Industry and coal-fired power plants
- ▼ Engine emissions (diesel, ships, trains)

Sunlight

Black carbon

Melt

Note: Illustration is diagrammatic and not to scale.

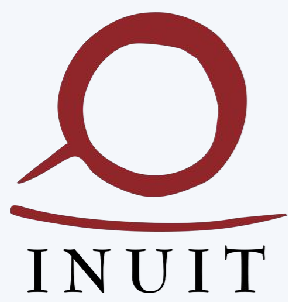


Coral and Ice

Many Strong Voices for Climate Action at the IMO

The Arctic and SIDS are barometers of global environmental change. They are considered critical communities for the ideas and programs that will strengthen the adaptive capacities of human societies confronting climate change.

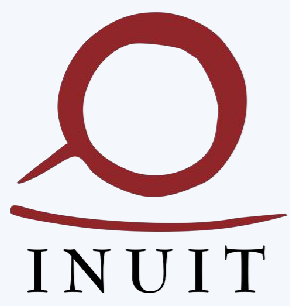




Inuit Circumpolar Council – Bringing the Arctic to the International Shipping Community

As the united voice of Inuit at the international level, the ICC has a proven track record of successful collaboration with numerous United Nations programmes and agencies, that have varied from environmental stewardship efforts to human rights to climate change to sustainable development. Within these UN initiatives, our organization has played a vital role in the transfer of otherwise inaccessible information. We continue to seek opportunities to further this role. Together with the IMO, the ICC believes that the Arctic can be managed in a way that respects Inuit and our culture, language, flora, fauna, the Arctic Ocean, and its coastal seas while balancing its use in the context of increased marine traffic.





Moving Forward



Qujannamiik - Nakurmiik - Ma'na - Quanaqquitit



www.inuitcircumpolar.com



PEOPLE OF THE ICE BRIDGE: THE FUTURE OF THE PIKIALASORSUAQ

Ummimmaat Nunaat
Ellesmere Island

KALAALLIT NUNAAT
GREENLAND

Siorapaluk

Talbot Inlet

Murchison Sund

Qaanaaq

Kangerlussuaq

Kiataq

Smith Bay

Appat

Sanerarsua

Savissivik

Qimusseriarsuaq
Melville Bay Nature Reserve

Coburg Island

Kullorsuaq

Nuussuaq

Nutaarmiut

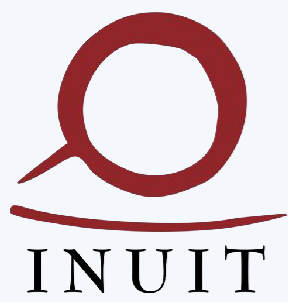
tit land

up Tariunga
ster Sound

Bylot Island



The Pikialasorsuaq is an extraordinary place. It is an Arctic haven where sky, ocean, and ice meet, teaming with marine life that has nourished Inuit subsistence culture for thousands of years. It is for the people who live and use the Pikialasorsuaq that we as Commissioners initiated this work.

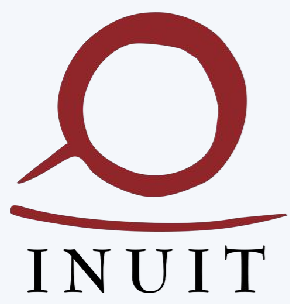


Pikialasorsuaq Commission

Commission was mandated to:

- Conduct consultations in communities in Canada and Greenland closely connected to Pikialasorsuaq
- Communicate how Inuit communities envision the future of this marine region





The Pikialasorsuaq Commission Recommendations

- Inuit-led:
 - Monitoring
 - Management
 - Mobility



Marine Mammal Concentration Areas

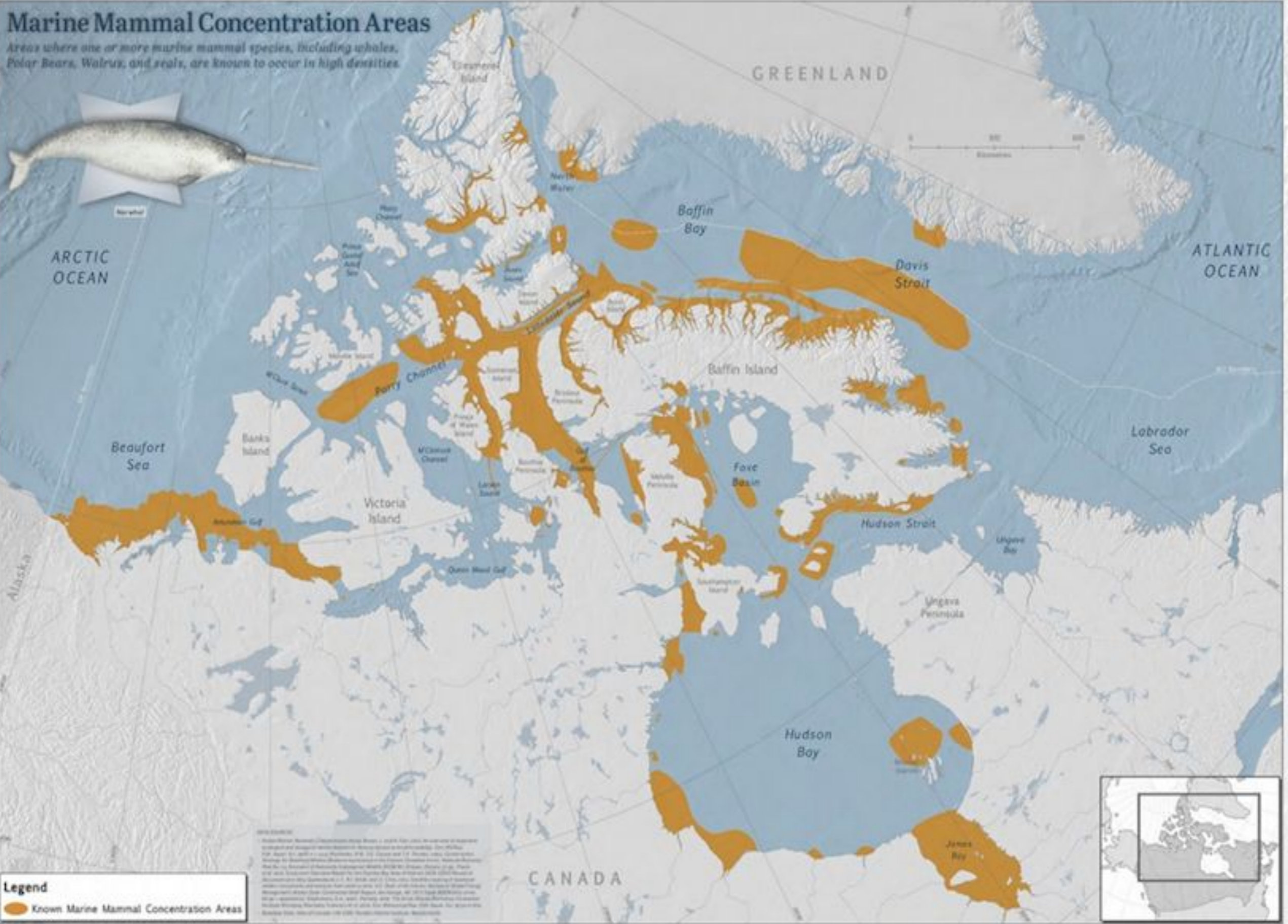
Areas where one or more marine mammal species, including whales, Polar Bears, Walrus, and seals, are known to occur in high densities.



ARCTIC OCEAN

GREENLAND

ATLANTIC OCEAN

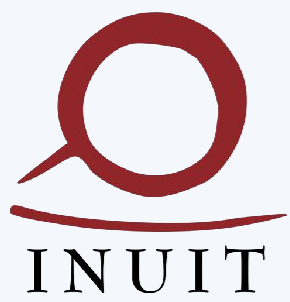


Legend

- Known Marine Mammal Concentration Areas

Map of the Arctic region showing marine mammal concentration areas. The map is based on data from the Canadian Wildlife Service and the International Whaling Commission. The map is a generalization and should not be used for navigation. The map is not a scale and should not be used for navigation. The map is not a scale and should not be used for navigation.





A Polynya and its people



Photo credit: Vincent Desrosiers



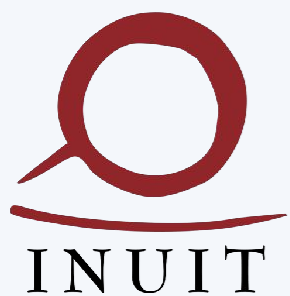
Photo credit: Vincent Desrosiers



Photo credit: Vincent Desrosiers



Photo credit: Susan van Gelder, via Flickr (<https://www.flickr.com/photos/susanvg/>)



Shipping in Pikialasorsuaq: What the commission heard

development seems to be a priority over the Inuit hunting rights, but it is preferable that us hunters be consulted before any management plans are implemented. [Moses Koonoo, Ikpiarjuk, (Arctic Bay)] ▼

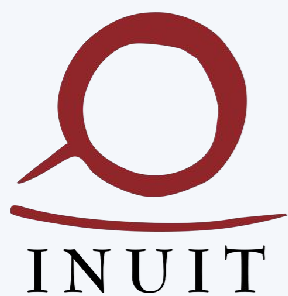


These vast areas of sea no longer seem to be that great anymore. Now that giant ships will pass through the waters the area of sea will be "too small" for both wildlife and the huge ships. (Nikolaj Heilmann, Upernavik) ▼



Regulations to limit shipping are a possible response to the increase in shipping; others argue that it should be banned altogether. (Elizabeth Karlsen, Nuussuaq) ▼





Nature and climate are not waiting: we need to act now

- Ask:
 - Listen to Inuit
 - IMO to implement UNDRIP
 - Arctic states to be champions for Inuit led approaches
 - Support Inuit full consultative status at the IMO
 - Wildlife doesn't know any borders, it is one ecosystem



Qujannamiik - Nakurmiik - Ma'na - Quanaqquitit



www.inuitcircumpolar.com

Thank you to:



This project is funded by